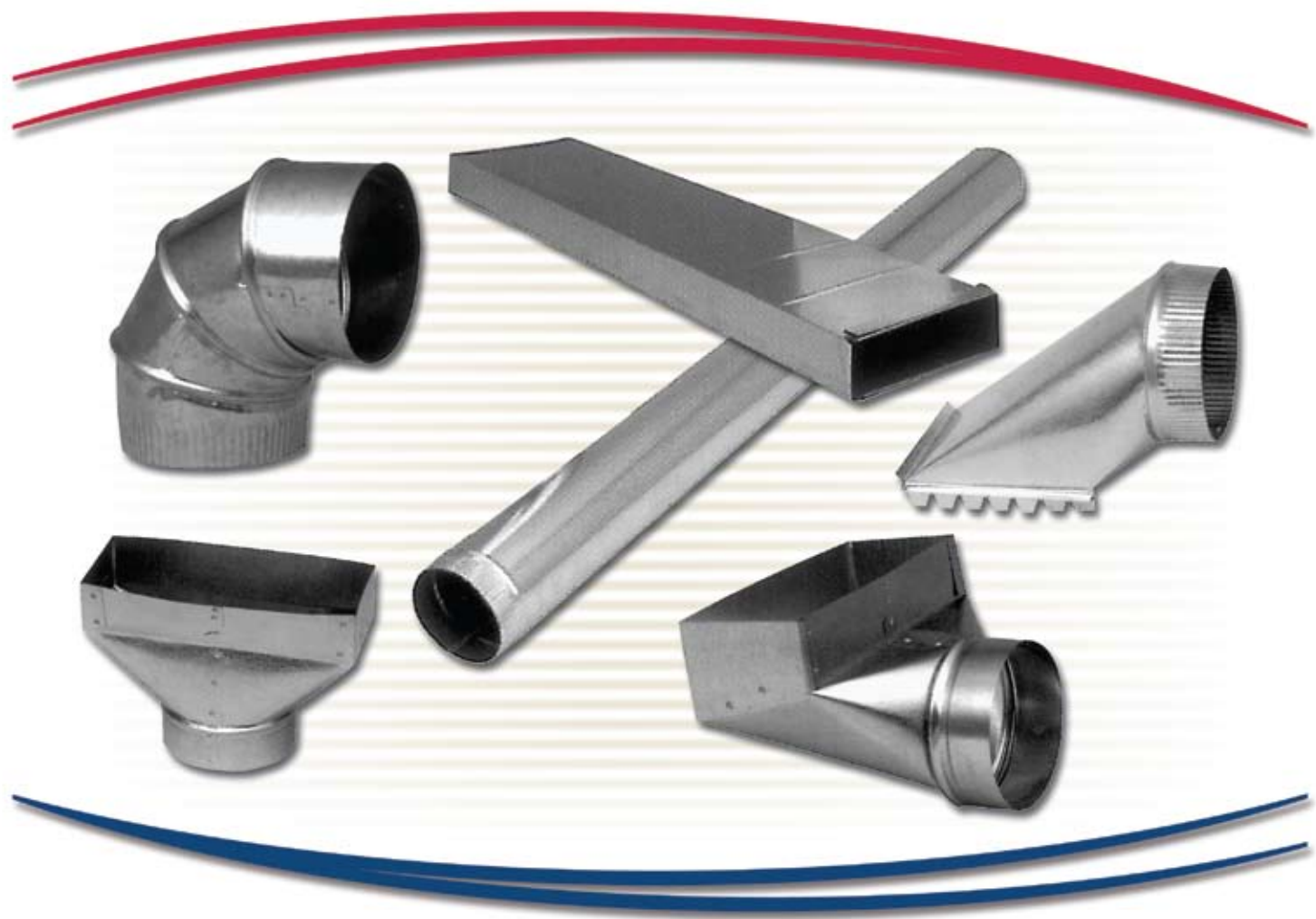




Built Better to Last Longer



Galvanized Product

Galvanized Product

PIPE - SNAP LOCK



CODE	DESCRIPTION	LENGTHS/BUNDLES	LENGTHS/RACK
7.SL460C	4X60 Galvanized Pipe C Lock	10L	500L
7.SL560C	5X60 Galvanized Pipe C Lock	10L	400L
7.SL660C	6X60 Galvanized Pipe C Lock	10L	300L
7.SL76028	7X60 Galvanized Pipe 28 GA	5L	60L
7.SL86028	8X60 Galvanized Pipe 28 GA	5L	60L
7.SL106028	10X60 Galvanized Pipe 28GA	5L	40L
7.SL126028	12X60 Galvanized Pipe 28GA	5L	40L

PIPE - SMOKE PIPE



CODE	DESCRIPTION	LENGTHS/BUNDLES	LENGTHS/RACK
7.SMP43026	4X30 Galvanized Pipe 26GA	10L	
7.SMP53026	5X30 Galvanized Pipe 26 GA	10L	
7.SMP53028	5X30 Galvanized Pipe 28 GA	10L	
7.SMP63026	6X30 Galvanized Pipe 26 GA	10L	
7.SMP63028	6X30 Galvanized Pipe 28 GA	10L	
7.SMP73026	7X30 Galvanized Pipe 26 GA	10L	
7.SMP73028	7X30 Galvanized Pipe 28 GA	10L	
7.SMP83024	8X30 Galvanized Pipe 24 GA	10L	
7.SMP83026	8X30 Galvanized Pipe 26 GA	10L	
7.SMP83028	8X30 Galvanized Pipe 28 GA	10L	
7.SMP93026	9X30 Galvanized Pipe 26 GA	10L	
7.SMP103024	10X30 Galvanized Pipe 24 GA	10L	
7.SMP103026	10X30 Galvanized Pipe 26 GA	10L	
7.SMP103028	10X30 Galvanized Pipe 28 GA	10L	
7.SMP123024	12X30 Galvanized Pipe 24 GA	10L	
7.SMP123026	12X30 Galvanized Pipe 26 GA	10L	
7.SMP123028	12X30 Galvanized Pipe 28 GA	10L	



ALUMINUM PIPE (.025")

CODE	DESCRIPTION	STD PACKAGE	SKID QTY
7.ASP43622	4 X 36 Aluminum D.D.E. 22 GA	10	

VOLUME DAMPERS



CODE	DESCRIPTION	STD PACKAGE	SKID QTY
7.VD004	4" Volume Damper	50	
7.VD005	5" Volume Damper	50	
7.VD006	6" Volume Damper	50	
7.VD007	7" Volume Damper	50	

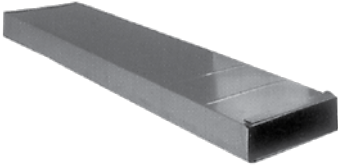


Built Better to Last Longer

Summertime Mfg. • Peterborough, Ontario, Canada K9H 7B1

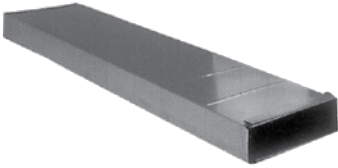
Galvanized Product

DUCT - 4'



CODE	DESCRIPTION	STD PACKAGE	SKID QTY
7.DL084PR	4' 8X8 PR Duct	600'	
7.DL104PR	4' 8X10 PR Duct	500'	
7.DL124PR	4' 8X12 PR Duct	500'	
7.DL144PR	4' 8X14 PR Duct	500'	
7.DL154PR	4' 8X15 PR Duct	500'	
7.DL164PR	4' 8X16 PR Duct	500'	
7.DL184PR	4' 8X18 PR Duct	320'	
7.DL204PR	4' 8X20 PR Duct	320'	
7.DL214PR	4' 8X21 PR Duct	320'	
7.DL224PR	4' 8X24 PR Duct	320'	
7.DL244PR	4' 8X24 PR Duct	320'	
7.DL264PR	4' 8X26 PR Duct	320'	
7.DL284PR	4' 8X24 PR Duct	320'	
7.DL304PR	4' 8X30 PR Duct	320'	
7.DL10204PR	4' 10X20 PR Duct	320'	
7.DL10224PR	4' 10X22 PR Duct	320'	
7.DL10244PR	4' 10X24 PR Duct	320'	
7.DL10264PR	4' 10X26 PR Duct	320'	
7.DL10304PR	4' 10X30 PR Duct	320'	

DUCT - 5'



CODE	DESCRIPTION	STD PACKAGE	SKID QTY
7.DL085	5' 8X8 PR Duct	750'	
7.DL105	5' 8X10 PR Duct	625'	
7.DL125	5' 8X12 PR Duct	625'	
7.DL145	5' 8X14 PR Duct	625'	
7.DL165	5' 8X16 PR Duct	625'	
7.DL185	5' 8X18 PR Duct	400'	
7.DL205	5' 8X20 PR Duct	400'	
7.DL225	5' 8X22 PR Duct	400'	
7.DL245	5' 8X24 PR Duct	400'	
7.DL265PR	5' 8X26 PR Duct	400'	
7.DL305PR	5' 8X30 PR Duct	400'	
7.DL10205PR	5' 10X20 PR Duct	400'	
7.DL10225PR	5' 10X22 PR Duct	400'	
7.DL10245PR	5' 10X24 PR Duct	400'	
7.DL12235	5' 12X23 PR Duct	400'	

Galvanized Product

DUCT ENDS (.025")



CODE	DESCRIPTION	STD PACKAGE	SKID QTY
7.DE08	8X8 Duct End	10	
7.DE10	8X10 Duct End	10	
7.DE12	8X12 Duct End	10	
7.DE14	8X14 Duct End	10	
7.DE15	8X15 Duct End	10	
7.DE16	8X16 Duct End	10	
7.DE18	8X18 Duct End	10	
7.DE20	8X20 Duct End	10	
7.DE21	8X21 Duct End	10	
7.DE22	8X22 Duct End	10	
7.DE24	8X24 Duct End	10	
7.DE26	8X26 Duct End	10	
7.DE28	8X28 Duct End	10	
7.DE30	8X30 Duct End	10	

CLEATS



CODE	DESCRIPTION	STD PACKAGE	SKID QTY
7.DC2602110	Drive Cleat 26GA – 10' Length	10	
7.DC30	Drive Cleat 30GA – 5' Length	25	2000
7.SC2602110	S Cleat 266A 10' Length	10	
7.SC30	S Cleat 266A 10' Length	25	2000

JOIST LINING



CODE	DESCRIPTION	STD PACKAGE	SKID QTY
7.JL12	12" 30 GA Joist Lining c/w Female Lock	50	
7.JL1232	12" 32 GA Joist Lining c/w Female Lock	50	
7.JL15	15" 30 GA Joist Lining c/w Female Lock	50	
7.JL16	16" 30 GA Joist Lining c/w Female Lock	50	
7.JL1632	16" 32 GA Joist Lining c/w Female Lock	50	
7.JL18	18" 30 GA Joist Lining c/w Female Lock	50	
7.JL19	19" 30 GA Joist Lining c/w Female Lock	50	
7.JL20	20" 30 GA Joist Lining c/w Female Lock	50	
7.JL24	24" 30 GA Joist Lining c/w Female Lock	50	

WALL STACK



CODE	DESCRIPTION	STD PACKAGE	SKID QTY
7.3104STACK	3-1/4 X 10 Wall Stack 4'	20'	
7.3105STACK	3/1/4 X 10 Wall Stack 5'	20'	



SUMMERAIRE

Built Better to Last Longer

Summeraire Mfg. • Peterborough, Ontario, Canada K9H 7B1

Galvanized Product

ELBOWS



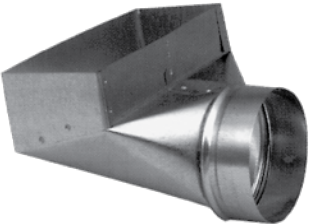
CODE	DESCRIPTION	STD PACKAGE	SKID QTY
7.GE49026	4" 90 Degree 26 GA Elbow	12	
7.GE49028	4" 90 Degree 28 GA Elbow	24	
7.GE49030	5" 90 Degree 30 GA Elbow	24	
7.GE59026	5" 90 Degree 26 GA Elbow	12	
7.GE59028	5" 90 Degree 28 GA Elbow	24	
7.GE59030	5" 90 Degree 30 GA Elbow	24	
7.GE69026	6" 90 Degree 26 GA Elbow	12	
7.GE69028	6" 90 Degree 28 GA Elbow	12	
7.GE69030	6" 90 Degree 30 GA Elbow	20	
7.GE79024	7" 90 Degree 24 GA Elbow	12	
7.GE79026	7" 90 Degree 26 GA Elbow	12	
7.GE79028	7" 90 Degree 28 GA Elbow	12	
7.GE89024	8" 90 Degree 24 GA Elbow	12	
7.GE89026	8" 90 Degree 26 GA Elbow	12	
7.GE89028	8" 90 Degree 28 GA Elbow	12	
7.GE109026	10" 90 Degree 26 GA Elbow	8	
7.GE109028	10" 90 Degree 28 GA Elbow	8	
7.GE129024	12" 90 Degree 24 GA Elbow	8	
7.GE129026	12" 90 Degree 26 GA Elbow	8	
7.GE129028	12" 90 Degree 28 GA Elbow	8	
7.GE109024	10" 90 Degree 24 GA Elbow	8	



ALUMINUM ELBOWS (.025")

CODE	DESCRIPTION	STD PACKAGE	SKID QTY
7.EC4	4" 90 Degree Aluminum 22 GA	12	

ANGLE BOOTS



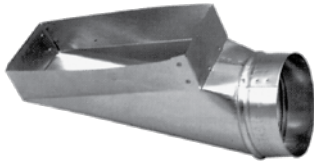
CODE	DESCRIPTION	STD PACKAGE	SKID QTY
7.AB4310	4" 3X10 Angle Boot	15	120
7.AB4410	4" 4X10 Angle Boot	18	144
7.AB5310	5" 3X10 Angle Boot	20	160
7.AB5410	5" 4X10 Angle Boot	18	144
7.AB5412	5" 4X12 Angle Boot	18	144
7.AB6310	6" 3X10 Angle Boot	18	144
7.AB6410	6" 4X10 Angle Boot	16	144

Galvanized Product

BASEMENT BOOT

CODE	DESCRIPTION	STD PACKAGE	SKID QTY
7.CB5410	5" 4X10 Basement Boot	16	

END BOOTS



CODE	DESCRIPTION	STD PACKAGE	SKID QTY
7.EB4310	4" 3X10 End Boot	36	288
7.EB4410	4" 4X10 End Boot	20	160
7.EB5310	5" 3X10 End Boot	30	240
7.EB5410	5" 4X10 End Boot	30	240
7.EB6410	6" 4X10 End Boot	25	200

UNIVERSAL BOOTS



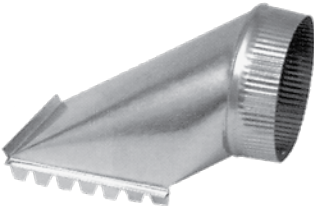
CODE	DESCRIPTION	STD PACKAGE	SKID QTY
7.JB4310	4" 3X10 Universal Boot	40	
7.JB4410	4" 4X10 Universal Boot	40	
7.JB5310	5" 3X10 Universal Boot	25	
7.JB5410	5" 4X10 Universal Boot	25	
7.JB6410	6" 4X10 Universal Boot	25	

SIDE TAKE OFF



CODE	DESCRIPTION	STD PACKAGE	SKID QTY
7.ST04	4" Side Take Off	80	640
7.ST05	5" Side Take Off	50	400
7.ST06	6" Side Take Off	50	400
7.ST07	7" Side Take Off	30	240
7.ST08	8" Side Take Off	30	240

TOP TAKE OFF



CODE	DESCRIPTION	STD PACKAGE	SKID QTY
7.TT04	4" Top Take Off	40	
7.TT05	5" Top Take Off	40	
7.TT06	6" Top Take Off	30	
7.TT07	7" Top Take Off	15	
7.TT08	8" Top Take Off	12	

Galvanized Product

REDUCERS



CODE	DESCRIPTION	STD PACKAGE	SKID QTY
7.RED43	4 – 3 Short 3 Piece Reducer No Crimp	72	
7.RED53	5 – 3 Short 3 Piece Reducer No Crimp	36	
7.RED54	5-4 Short 3 Piece Reducer No Crimp	36	
7.RED64	6-4 Short 3 Piece Reducer No Crimp	32	
7.RED65	6-5 Short 3 Piece Reducer No Crimp	32	
7.RED75	7-5 Short 3 Piece Reducer No Crimp	15	
7.RED76	7-6 Short 3 Piece Reducer No Crimp	15	
7.RED86	8-6 Short 3 Piece Reducer No Crimp	10	
7.RED87	8-7 Short 3 Piece Reducer No Crimp	10	
7.RED6526	6-5 26 Gas Short 3 Piece Reducer No Crimp	32	
7.RED7526	7-5 26 Gas Short 3 Piece Reducer No Crimp	15	
7.RED7626	7-6 26 Gas Short 3 Piece Reducer No Crimp	15	
7.RED8626	8-6 26 Gas Short 3 Piece Reducer No Crimp	10	
7.RED8726	8-7 26 Gas Short 3 Piece Reducer No Crimp	10	
7.RED64ECC	6-4 3 Piece Eccentric Reducer No Crimp	32	

GALVANIZED TEE



CODE	DESCRIPTION	STD PACKAGE	SKID QTY
7.TEE426	4X4X4 Galvanized Tee 26 GA	18	
7.TEE526	5X5X5 Galvanized Tee 26 GA	18	
7.TEE626	6X6X6 Galvanized Tee 26 GA	12	
7.TEE726	7X7X7 Galvanized Tee 26 GA	10	
7.TEE826	8X8X8 Galvanized Tee 26 GA	6	

REDUCING TEE



CODE	DESCRIPTION	STD PACKAGE	SKID QTY
7.TEER54426	5X5X4 Galvanized Tee 26 GA	16	
7.TEER55426	5X5X4 Galvanized Tee 26 GA	16	
7.TEER65526	6X5X5 Galvanized Tee 26 GA	8	
7.TEER66426	6X6X4 Galvanized Tee 26 GA	10	
7.TEER66526	6X6X5 Galvanized Tee 26 GA	10	
7.TEER77626	7X7X6 Galvanized Tee 26 GA	6	
7.TEER88626	8X8X6 Galvanized Tee 26 GA	6	

Galvanized Product



GALVANIZED T-Y'S

CODE	DESCRIPTION	STD PACKAGE	SKID QTY
7.TY526	5X5X5 Galvanized TY 26GA	12	
7.TY626	6X6X6 Galvanized TY 26GA	6	
7.TY726	7X7X7 Galvanized TY 26GA	6	
7.TY826	8X8X8 Galvanized TY 26GA	6	



REDUCING T-Y'S

CODE	DESCRIPTION	STD PACKAGE	SKID QTY
7.TY54426	5X4X4 Galvanized TY 26 GA	12	
7.TY55426	5X5X4 Galvanized TY 26 GA	12	
7.TY64426	6X4X4 Galvanized TY 26 GA	16	
7.TY65426	6X5X4 Galvanized TY 26 GA	16	
7.TY65526	6X5X5 Galvanized TY 26GA	10	
7.TY66426	6X6X4 Galvanized TY 26 GA	12	
7.TY66526	6X6X5 Galvanized TY 26 GA	8	
7.TY77626	7X7X6 Galvanized TY 26 GA	6	

DUCT BLANK

CODE	DESCRIPTION	STD PACKAGE	SKID QTY
7.GS1212	12"X12" Galvanized Blank	50	

FILTER RACK

CODE	DESCRIPTION	STD PACKAGE	SKID QTY
3.EFR1625	16 x 25 x 1 Filter Rack		120
3.EFR1625FL	16 x 25 x 1 Filter Rack c/w Fish Lock		120

